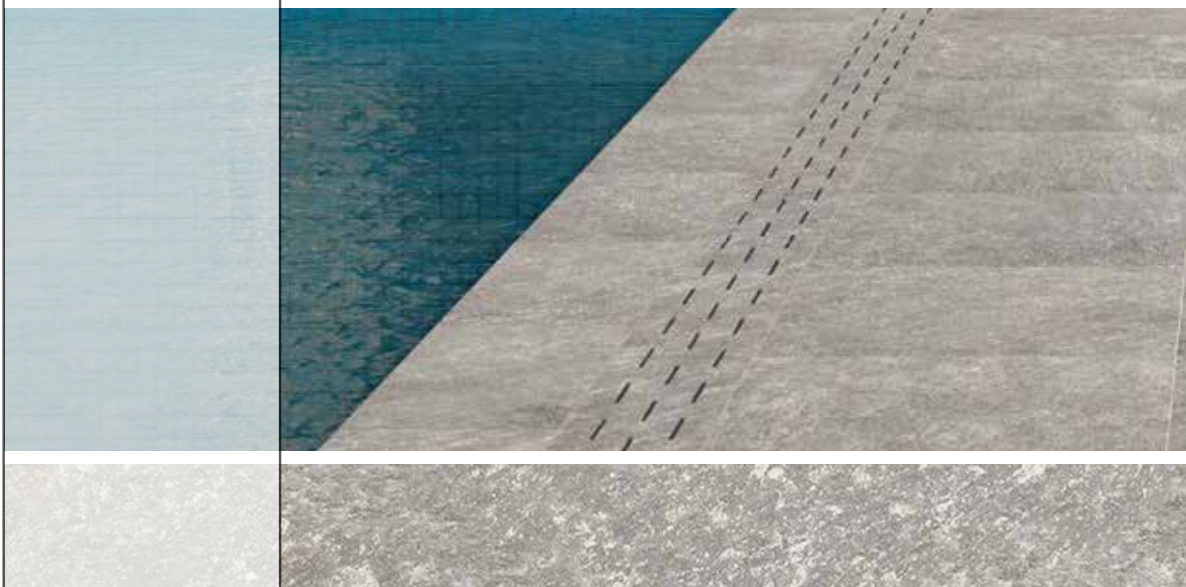


FP-2
freeplace-2
edelweiss




TUSCANIA
ceramiche





edelweiss



Spessore
Thickness
Épaisseur
Stärke
2 cm



grès porcellanato tutta massa
full body porcelain stoneware
grès cérame coloré dans la masse
durchgefärbtes feinsteinzeug

TUSCANIA
ceramiche



FP2 grey

61,5x61,5 cm N .24"x24" N - elemento a L 30x61,5x5 cm - 12"x24"x2" - angolare elemento a L 30x30x5 cm - 12"x12"x2" - griglia 20x61,0 cm - 8"x24" - griglia angolo SX 20x61,0 cm - 8"x24" - griglia angolo DX 20x61,0 cm - 8"x24"

FP2

N **R**

61,5x61,5 cm N . 24"x24" N
61,0x61,0 cm R . 24"x24" R

R

Rettificato - Recified

N

Naturale - Natural

Impasto Colorato
Colored Body
Masse Colorée
Durchgefärbt



R11
FP2

HD



HIGH

grey



61,5x61,5 cm 24"x24" FP2

55,56 **N**
67,90 **R**

61,0x61,0 cm 24"x24" FP2

coal



61,5x61,5 cm 24"x24" FP2

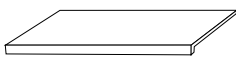
55,56 **N**
67,90 **R**

61,0x61,0 cm 24"x24" FP2

FP2 grey
61,0x61,0 cm R . 24"x24" R



FP2 pezzi speciali - special pieces - pièces spéciales - formteile



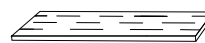
elemento "L"
30x61,5x5 cm 12"x24"x2" **100,00/PZ**

grey _____
coal _____



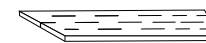
angolare elemento "L"
30x30x5 cm 12"x12"x2" **117,59/PZ**

grey _____
coal _____



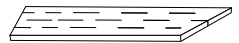
griglia
20x61,0 cm 8"x24" R **117,59/PZ**

grey _____
coal _____



angolo SX
griglia angolo 20x61,0 cm 8"x24" R **256,17/coppia**

grey _____
coal _____

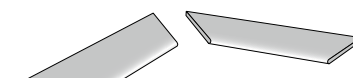


angolo DX



round lineare
30x61,5 cm 18"x24" **100,00/PZ**

grey _____
coal _____



angolo SX
round angolare 30x61,5 cm 18"x24" **234,57/coppia**

grey _____
coal _____



angolo SX
angolo bordo toro 30x61,5 cm 18"x24" **145,06/PZ**

grey _____
coal _____





angolo DX

Note - Notes - Notes - Anmerkungen

I pezzi speciali FP2 vengono venduti al pezzo e solo su ordinazione (tempo minimo di consegna 20 gg lavorativi dall'ordine)
The special pieces FP2 are sold by piece and only on request (minimum delivery time 20 working days from date of order).
Les pièces spéciales FP2 sont vendus à la pièce et uniquement sur commande (délai minimum de livraison 20 jours ouvrés à partir de la commande).
Spezial Teile FP2 sind pro Stück verkauft und nur auf Bestellungen produziert. (Lieferzeiten mindesten 20 arbeitstage ab Auftragbestätigung)

Tabella pesi ed imballi - Sizes weight and packaging

Mesures poids et emballages - Tabelle der Gewichte und Verpackungen

formati - sizes - tailles - formate		pz. x box	mq. x box	kg. x box	box x pal.	mq. x pal.	kg. x pal.	
61,5x61,5 cm 24"x24" FP2 (naturale)	20 mm	2	0,76	34,16	30	22,8	1035	80x120x75
61,0x61,0 cm 24"x24" FP2 (rettificato)	20 mm	2	0,74	32,5	30	22,2	985	80x120x75

Note - Notes - Notes - Anmerkungen

I battiscopa vengono venduti a pz. e a scatola completa. Tutti gli altri pezzi speciali vengono venduti al pezzo.
I gradini vengono prodotti solo su ordinazione (tempo minimo di consegna 20 gg lavorativi).

Skirtings are sold by piece and full boxes. All other special trims are sold by piece.
Steps are produced only on request (minimum delivery terms of 20 days).

Les plinthes sont vendues la pièce et par boîte complete. Les autres pièces spéciales sont vendus la pièce.
Le plat de marche sont produit sur demande (délai minimum de 20 jours).

Die Sockelleisten werden pro Stk. und Vollen Kartons verkauft.
Stufen und Stufenecken werden nur auf Bestellung produziert (Lieferzeiten mindesten 20 arbeitstagen ab Auftragserteilung).

simbologia caratteristiche tecniche - symboles technical characteristics -
 symboles des caracteristiques techniques - symbole technischen eigenschaften

TUSCANIA
 ceramich

	CARATTERISTICHE TECNICHE TECHNICAL CHARACTERISTICS CARACTÉRISTIQUES TECHNIQUES TECHNISCHE MERKMALE	NORMA DI RIFERIMENTO REFERENCE STANDARD NORME DE REFERENCE PRÜFMETHODE	VALORE RICHIESTO REQUIRED VALUE VALEUR REQUISE SOLLWERT	VALORE MEDIO TUSCANIA AV. TUSCANIA VALUE VALEUR MOYENNE TUSCANIA MITTLERER TUSCANIA-WERT	
	DIMENSIONI DIMENSIONS DIMENSIONS ABMESSUNGEN	ISO 10545-2	CONFORME COMPLIANT CONFORME KONFORM	CONFORME COMPLIANT CONFORME KONFORM	
	ASSORBIMENTO D'ACQUA WATER ABSORPTION ABSORPTION D'EAU WASSERAUFNAHME	ISO 10545-3	≤ 0,5 %	<0,4%	
	RESISTENZA A FLESSIONE MODULUS OF RUPTURE RESISTANCE A LA FLEXION BIEGEFESTIGKEIT	ISO 10545-4	MODULUS OF RUPTURE R ≥35 N/MM ² BREAKING STRENGTH S ≥1300 N	R>50 N/mm ² S>2500 N	
	DUREZZA SUPERFICIALE SCRATCH RESISTANCE DURETE SUPERFICIELLE KRATZFESTIGKEIT	ISO 10545-7	0 - V	IV	
	DILATAZIONE TERMICA LINEARE LINEAR THERMAL EXPANSION DILATATION THERMIQUE LINEAIRE LINEARE WÄRMEAUSSDEHNUNG	ISO 10545-8	≤ 9x10 ⁻⁵ °C ⁻¹	6x10 ⁻⁵ °C ⁻¹	
	RESISTENZA AGLI SBALZI TERMICI THERMAL SHOCK RESISTANCE RESISTANCE AUX ECARTS DE TEMPERATURE ITEMPERATURWECHSELBESTÄNDIGKEIT	ISO 10545-9	RESISTENTE RESISTANT RESISTANT BESTÄNDIG	RESISTENTE RESISTANT RESISTANT BESTÄNDIG	
	RESISTENZA AL GELO FROST RESISTANCE RESISTANCE AU GEL FROSTBESTÄNDIGKEIT	ISO 10545-12	RESISTENTE RESISTANT RESISTANT BESTÄNDIG	RESISTENTE RESISTANT RESISTANT BESTÄNDIG	
	RESISTENZA AGLI ACIDI ED ALLE BASI ACID AND ALKALI RESISTANCE RESISTANCE AUX ACIDES ET AUX BASES SÄURE- UND LAUGENBESTÄNDIGKEIT	ISO 10545-13	CLASS GB MIN.	LOW CONCENTRATION GLA HIGH CONCENTRATION GHA	
	RESISTENZA ALL'ATTACCO CHIMICO CHEMICAL RESISTANCE RESISTANCE À L'ATTAQUE CHEMIQUE CHEMISCHE BESTÄNDIGKEIT	ISO 10545-13	CLASS GB MIN.	GA	
	RESISTENZA ALLE MACCHIE STAIN RESISTANCE RESISTANCE AU TACHES FLECKENBESTÄNDIGKEIT	ISO 10545-14	CLASS 3 MIN.	5	
	COEFFICIENTE DI ATTRITO (SCIVOLOSITÀ) FRICTION COEFFICIENT (SLIPPERINESS) COEFFICIENT DE FRICTION (GLISSEMENT) REIBUNGSKOEFFIZIENT (RUTSCHIGKEIT)	BCR - ITALIA DM DEL 14-06-89	ASTM - USA ASTM C1028	DIN - GERMANIA DIN 51130	
		DRY RUBBER 0,62	WET RUBBER 0,51	DRY LEATHER 0,62	DRY NEOLYTHE 0,69
THE PRODUCTS HAVING AN ABSORPTION < 0,5% ARE CLASSIFIED ACCORDING THE UNI CEN STANDARDS "FULLY VITRIFIED TILES" AND ACCORDING TO THE ASTM STANDARDS "IMPERVIOUS TILES"					



Tuscania S.p.A.
Via Giardini Sud, 4603 - 41028 Serramazzoni (Mo) - Italia
Tel. +39 0536.952399 - Fax +39 0536.954716
info@tuscaniagres.it - www.tuscaniagres.it

